

FE Series

F-Eclipse Indoor Sports Floodlight, 1000W HID

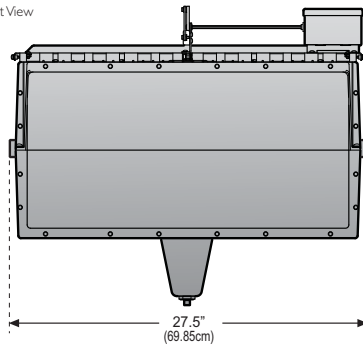
Type:	Job:				Approvals:
Catalog Number:					
FEM-1000 - - MF-1 - MW(X)CBLKMP					
Series/Source-Wattage (Fixture Series)	Optics (Reflector)	Mounting (Standard)	Standard Features (X = Cord length in feet: 8 or 10)	Accessories (Field Installed - Shipped Separately)	
1000-MPBM - ESCM-MW-6C-L2320P -					
(Remote Ballast Series)	Voltage		Options (Factory Installed)		Date:
					Page 1 of 6

Overall Dimensions

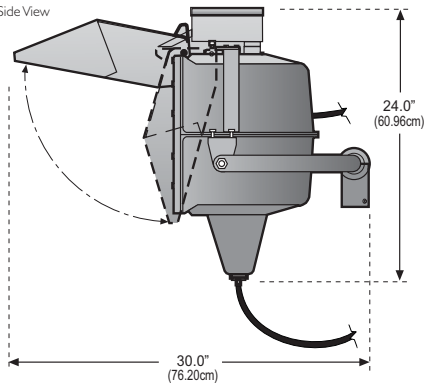
For Reference Only

Optic Assembly

Front View



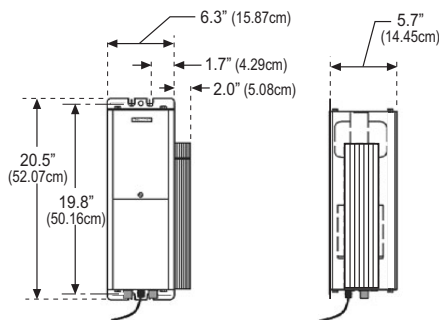
Side View



Weight

45 lbs (20.41 kgs)

Remote Ballast



Weight

45 lbs (20.41 kgs)

Specifications

Housing

The F-Eclipse blackout floodlight features a die-cast aluminum alloy housing with integrally-cast heat dissipating fins. Standard unit constructed to IP52.

Optics (Reflector)

High purity anodized aluminum reflectors (minimum 94% reflectivity), assembled without machine forming to assure maximum efficiency.

Lamp Access

A gasketed and removable socket assembly provides lamp access from below without disturbing aiming.

Lens

Lens shall be 7/32" glass, tempered to withstand thermal and physical shock; held by die-cast aluminum frame and sealed to housing flange by an extruded gasket and stainless steel screws to provide a sealed optical assembly.

Socket

Grip-type mogul base socket, pre-wired with 6 ft. SO cord and plug for secondary connection to ballast. Glass end of lamp is held in precise photometric alignment and protected from breakage by a Stabilux socket.

Shutter System

Shutter system is provided to simulate instant on/off of the luminaire for special theatrical effects. Shutter motor is reversible high torque and permanently lubricated for long life. Motor is rated to operate at 120 volts from a tap on the ballast (no external power source required for shutter system operation). Fixture is capable of operating with the shutter closed indefinitely. Fail-safe mechanism extinguishes lamp should the shutter fail to close within three seconds and is reset by turning primary voltage to the luminaire off and on, or by pressing re-set button on "Eclipse" module.

Ballast

SilentGuard high power factor MPB remote indoor Eclipse Series ballast is enclosed in an extruded aluminum housing. Core and coil are encapsulated in a polyester resin compound (standard SilentGuard feature) to minimize ballast noise and ensure cooler operation. Ballast has Class H, 180°C (356°F) rated insulation. Crest factor does not exceed 1.8. Ballast starting current is less than operating with reliable starting down to -29°C (-20°F). Primary side of ballast is pre-wired with 6 ft. SO cord and twist-lock plug. Modular receptacles are provided to simplify secondary wiring of the HID socket and the motorized shutter. External "Eclipse" module featuring Red/Green LED status indicators of mechanical and electrical ballast function. Control override input jack allows direct control via hand-held controller.

Mounting

Cast aluminum mastfitter (MF-1) for fixture provides slipfitter for 2-3/8" O.D. x 4" tall vertical tenon (by others). Remote "MPB" ballast is adaptable for wall, platform or rack mounting.

Finish

Standard finish for luminaire and remote ballast shall be black UltraClad polyester powder coating, 2.5 mil nominal thickness, electrostatically applied and oven cured. All components shall be thoroughly cleaned by a 5 stage pre-treatment process including iron phosphate bath and non-chromic acid etching stages, ensuring optimum performance characteristics.

Listings

UL/cUL Listed Luminaire, UL 1598, suitable for Damp Locations. The quality systems of this facility have been Registered by UL to the ISO 9000 Series Standards.

Warranty / Terms and Conditions

Standard 5 Year Limited Warranty

The current Philips Wide-Lite Warranty may be found at www.wide-lite.com (keyword: warranty) as well as the current Standard Terms and Conditions of Sale (keyword: terms).

All sales of items in this catalogue shall be subject to the Philips Wide-Lite Standard Terms and Conditions of Sale current at the time of shipment. If you do not have a copy of the Philips Wide-Lite Warranty and Standard Terms, please contact the factory for same prior to ordering.



Some luminaires use fluorescent or high intensity discharge (HID) lamps that contain small amounts of mercury. Such lamps are labeled 'Contain Mercury' and/or with the symbol 'Hg'. Lamps that contain mercury must be disposed of in accordance with local requirements. Information regarding lamp recycle and disposal can be found at www.lamprecycle.org.

FE Series

F-Eclipse Indoor Sports Floodlight, 1000W HID

Type:	Job:	Page 2 of 6
-------	------	-------------



Fixture Series/Source-Wattage	Optics <i>(Reflector)</i>	Mounting
Metal Halide <input checked="" type="checkbox"/> FEM-1000	<input type="checkbox"/> BCO <input type="checkbox"/> DCO <input type="checkbox"/> CCO	<input checked="" type="checkbox"/> MF-1 Mastfitter

Remote Ballast Series	Voltage
Metal Halide <input checked="" type="checkbox"/> 1000-MPBM Fixtures are furnished with regulating HPF single voltage ballasts: 120V, 208V, 277V, 347V or 480V.	<input type="checkbox"/> 120 <input type="checkbox"/> 208 <input type="checkbox"/> 277 <input type="checkbox"/> 347 <input type="checkbox"/> 480

Options (Factory Installed)	Accessories (Field Installed - Shipped Separately)
<input type="checkbox"/> BLEM Bi-Level (for Shutter System) <input type="checkbox"/> F1 Single Fuse (120/277/347V) <input type="checkbox"/> F2 Double Fuse (208/240/480V)	<input type="checkbox"/> F1-KIT Single Fuse Kit (120/277/347V) <input type="checkbox"/> F2-KIT Double Fuse Kit (208/240/480V) <input type="checkbox"/> FB-1 Flat Base Mount <input type="checkbox"/> EMB-S Single Fixture Mounting Bracket <input type="checkbox"/> EMB-D Double Fixture Mounting Bracket <input type="checkbox"/> FE-STY-CBL Fixture Safety Cable <input type="checkbox"/> SRB Strain Relief Bracket <input type="checkbox"/> UMB-6 6" Universal Mounting Bracket <input type="checkbox"/> UMB-12 12" Universal Mounting Bracket <input type="checkbox"/> UMB-18 18" Universal Mounting Bracket

FE Series

F-Eclipse Indoor Sports Floodlight, 1000W HID

Type:	Job:	Page 3 of 6
-------	------	-------------

Distribution Guide & Ballast Data ^(1,2)


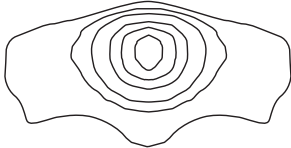
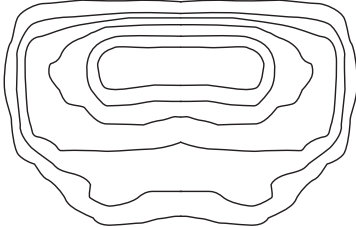
Source Type ⁽¹⁾	Catalog Number	Reflector Type	Lamp ⁽²⁾ Envelope	.ies File Name	Ballast Type ⁽³⁾	ANSI Code	Line Current 120 / 208 / 277 / 347 / 480	Line Watts
MH	FEM-1000	BCO	BT56	Consult factory	CWA	M47 / H36	9.2 / 5.6 / 4.7 / 4.1 / 3.2 / 2.4	1080
	FEM-1000	DCO	BT56	Consult factory	CWA	M47 / H36	9.2 / 5.6 / 4.7 / 4.1 / 3.2 / 2.4	1080
	FEM-1000	CCO	BT56	Consult factory	CWA	M47 / H36	9.2 / 5.6 / 4.7 / 4.1 / 3.2 / 2.4	1080

1) MH = Metal Halide.

2) Clear lamps recommended for optimum performance.

3) CWA = Constant Wattage Autotransformer.

Beam Spreads and Distribution Patterns

BEAM PATTERNS		Max Candle Power	H x V NEMA	BEAM SPREADS	
Reflector Type	Wattage/Source			Horizontal 10% Field Angle	Vertical 50% Beam Angle
BCO	1000W MH	276,460	2 x 3	28° x 44°	13° x 28°
					
DCO	1000W MH	129,621	5 x 4	73° x 56°	26° x 29°
					
CCO	1000W MH	59,621	7 x 5	31° x 135°	78° x 31°
					

Philips Wide-Lite reserves the right to change specifications and dimensions without notice. Lamp and electrical specifications / availability subject to change by manufacturer without notice. Please refer to detailed specification sheets for additional information and spec details.

1611 Clovis Barker Road • San Marcos, TX 78666 • Phone: 512.392.5821 • Fax: 512.753.1122 • www.wide-lite.com

© 2010 Philips Group. All rights reserved.

Bulletin No. WLSP0261B1110

FE Series

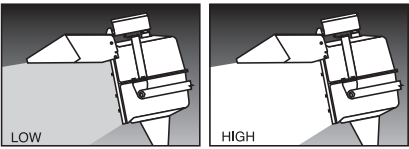
F-Eclipse Indoor Sports Floodlight, 1000W HID

Type:	Job:	Page 4 of 6
-------	------	-------------

Option details (Factory Installed)

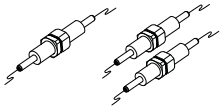
BLEM *Bi-Level dimming ballast for Shutter Systems*
Bi-Level feature is specified as a Ballast Option.

Bi-Level provides high/low level of lamp output with up to 50% power consumption.
Zero crossover network avoids strobing and lamp dropout.



F1 *Single fuse (120/277/347V)*
F2 *Double fuse (208/240/480V)*

Fuses are DTK/KLK 30 amp unless otherwise specified.



FE Series

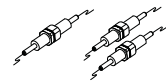
F-Eclipse Indoor Sports Floodlight, 1000W HID

Type:	Job:	Page 5 of 6
-------	------	-------------

Accessory details (Field Installed - Shipped Separately)

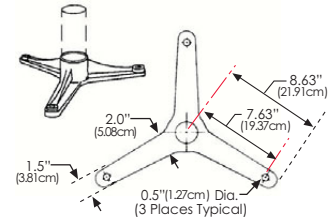
- F1-KIT** Single fuse kit (120/277/347V)
F2-KIT Double fuse kit (208/240/480V)

Consists of 1 or 2 fuse holders and 1 or 2 KTK 20 amp fuses. Field installed.



- FB-1** Flat base mount

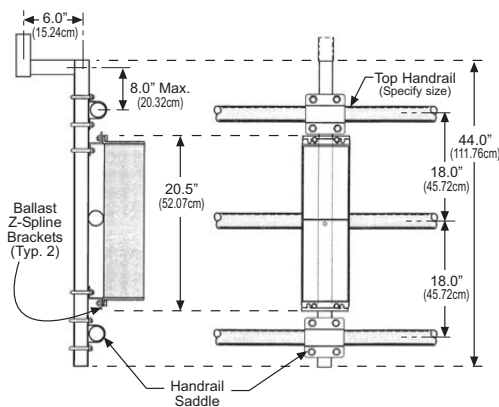
Cast aluminum mounting bracket for installing floodlights on flat surfaces. For use with 2-3/8" O.D. pipe tenon (by others). Limit height to 8".



- EMB-S** Single fixture mounting bracket

Bracket for mounting single fixture to catwalk.
Handrail size must be specified. Consult factory.

Shown with Fixture Safety Cables securing fixture at yoke to handrail of catwalk.



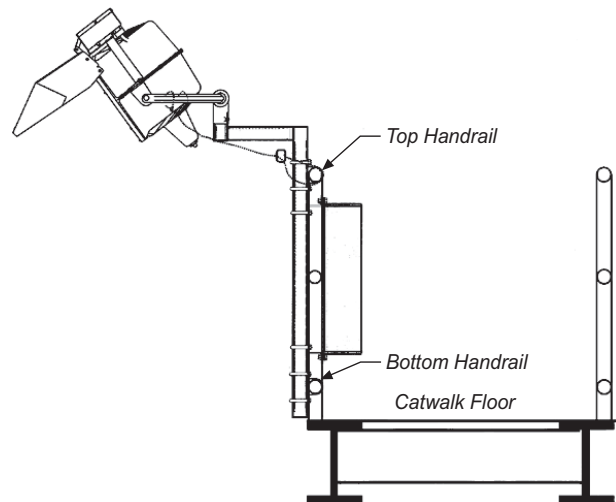
All steel parts are finished Semi-gloss Black.

All hardware zinc plated.

Ends of all exposed tubes are fitted with plastic closures.

Ballasts mount to "Z-Spline" Brackets, attached to fixture mounting bar by U Bolts.

Shipping Wt: 18 lbs. Shipped Unassembled.

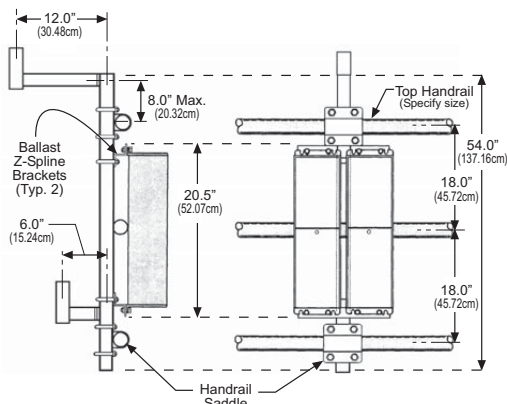


- EMB-D** Double fixture mounting bracket

Bracket for mounting two stacked fixtures to catwalk.

Handrail size must be specified. Consult factory.

Shown with Fixture Safety Cables securing fixture at yoke to handrail of catwalk.



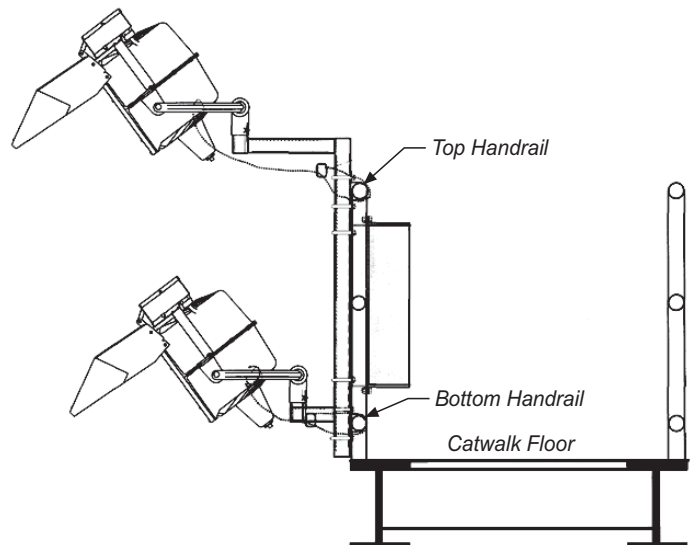
All steel parts are finished Semi-gloss Black.

All hardware zinc plated.

Ends of all exposed tubes are fitted with plastic closures.

Ballasts mount to "Z-Spline" Brackets, attached to fixture mounting bar by U Bolts.

Shipping Wt: 20 lbs. Shipped Unassembled.



FE Series

F-Eclipse Indoor Sports Floodlight, 1000W HID

Type:	Job:	Page 6 of 6
-------	------	-------------

Accessory details continued (Field Installed - Shipped Separately)

FE-STY-CBL *Fixture Safety Cable* 1/8" stainless steel aircraft cable for securing fixture head to catwalk handrail.

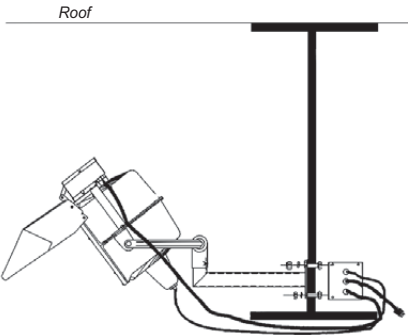
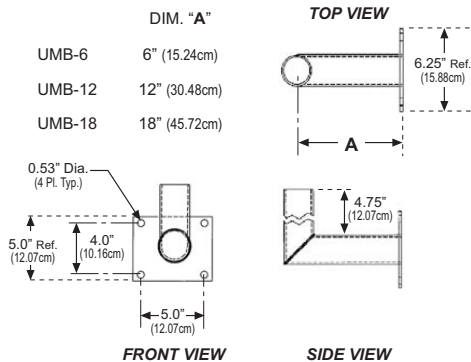
SRB *Strain relief bracket* Provides strain relief and shielding for modular wiring cable protection. Also provides convenient handling of ballast.

UMB-6 6" universal mounting bracket Bracket for mounting to structural I-Beam. Black finish is standard. Consult factory.

UMB-12 12" universal mounting bracket

UMB-18 18" universal mounting bracket

UMB-18 shown.



Mounting bracket to be mounted to I-Beam per Engineer's specifications. Four support bolts included. All other mounting hardware by others.

Ballast to be mounted to I-Beam per Engineer's specifications.

Notes



ISO 9001
Certified